

SHOE RE-LABEL

a method of re-labelling a pair of fancy shoes to be re-appropriated - defying the advertised common narratives.

a *>SELF_PASSAGE<* method

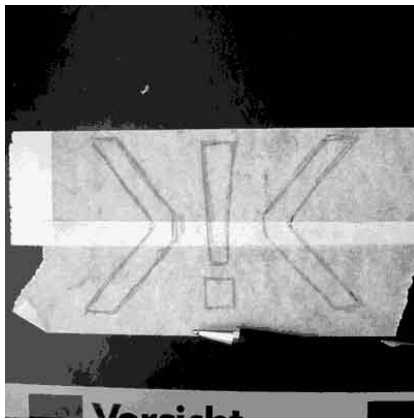
© copyleft by *>wronsov<* May 2004



1. get a pair of fancy shoes, preferably on sale.



2. tape some masking tape on a glossy surface for cutting (easy to take off again).



3. draw the design you want on your shoes.



4. cut out parts to be colored.



5. take off the tape from the cutting surface.



6. gently add the masked design onto the shoe. press along inner edges to make tape fit nicely (no paint flowing in under).



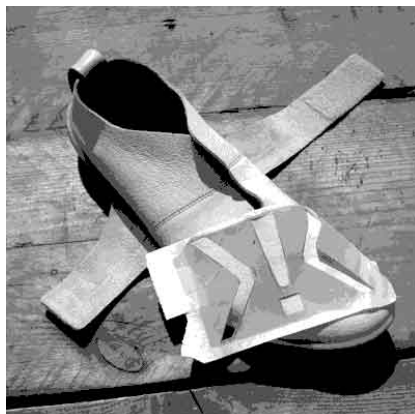
7. mask rest of shoe



8. spray many thin layers.



9. take off masking tape gently, save the cut-out design...



10. to be added on the other shoe (if you want the same) - repeat steps.



11. try walking in my shoes!